

LUME

Who doesn't love the look of natural stone in a beautiful modern bathroom or kitchen?

Lume captures the essence of natural stone mosaic on a scored base, offering all the benefits of ceramic without the drawbacks of the natural material.

Lume comes on a 30 x 30cm tile and is available in four different score formats, creating a completely seamless look when grouted.

The 27 different faces in each design ensure a natural stone look with virtually no repeats.

With a range of stones from mellow neutrals to statement-makers, Lume has a design to capture every heart.



Fingers Diamond White (Satin Matt) HCC4Q-117

LUME PRODUCT FACTS:

- Suitable for kitchen, bathroom, laundry and other indoor walls
- No sealing required
- 4 formats - Kit Kat, Fingers, Brick and Subway
- 12 colours available in satin matt and gloss finishes
- Colour variation - V3 (moderate variation)
- Product faces - 27
- Size - 300mm x 300mm (rectified)
- 9 tiles per box / 0.81m² per box
- Easy and economical to install
- Australian designed and made

Photographs or illustrations should be used as a guide only.

To ensure accurate selection, please order a tile sample from your local tile store or email customersupport@scceramics.com

CONTENTS



KIT KAT FORMAT
P. 2 - 3



FINGERS FORMAT
P. 4 - 5



BRICK FORMAT
P. 6 - 7



SUBWAY FORMAT
P. 8 - 9

LUME INSPIRATION

P. 10 - 11



Diamond White
P. 12 - 13 Satin Matt / Gloss



Biscotti Bliss
P. 14 - 15 Satin Matt / Gloss



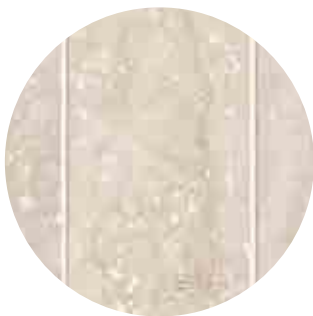
Silk Grey
P. 16 - 17 Satin Matt / Gloss



Ancient Grey
P. 18 - 19 Satin Matt / Gloss



Pegasus Cream
P. 20 - 21 Satin Matt / Gloss



Amalfi Cream
P. 22 - 23 Satin Matt / Gloss



Twilight Sky
P. 24 - 25 Satin Matt / Gloss



Cosmopolitan Pink
P. 26 - 27 Satin Matt / Gloss



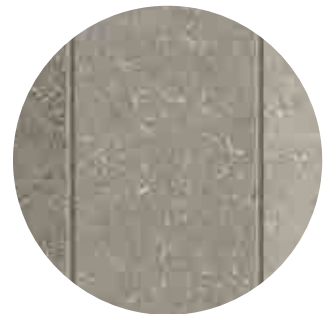
Titanium Chill
P. 28 - 29 Satin Matt / Gloss



Stella Taupe
P. 30 - 31 Satin Matt / Gloss



Angola Grey
P. 32 - 33 Satin Matt / Gloss



Grigio Haze
P. 34 - 35 Satin Matt / Gloss

TILE CARE AND MAINTENANCE / GROUT CONSIDERATIONS

P. 36 - 37

KIT KAT FORMAT

TILE SIZE: 300 x 300mm

SCORED TO: 100 x 14mm RECTANGLES

Ask anyone in the interior design world what the hottest trend in tiles is right now and the answer has gotta be “Kit Kats”

These little guys have their roots way back in Japanese glazed mosaics and the look is on point.



Kit Kat Pegasus Cream (Satin Matt) HCB4P-117



FINGERS FORMAT

TILE SIZE: 300 x 300mm

SCORED TO: 150 x 25mm RECTANGLES

The proportions of Lume's fingers format is sublimely elegant creating a look that is equally at home in a modern or classic setting.

Fingers format has plenty of interest but without the intensity of Kit Kats.



Fingers Pegasus Cream (Satin Matt) HCB4Q-117



BRICK FORMAT

TILE SIZE: 300 x 300mm

SCORED TO: 150 x 50mm RECTANGLES

Every Lume format has a surprisingly different vibe and the bricks format is no exception. The three to one ratio is styled after the traditional Moroccan bejmat shape and the look is so stylish.



Brick Pegasus Cream (Satin Matt) HCB4R-117



SUBWAY FORMAT

TILE SIZE: 300 x 300mm

SCORED TO: 300 x 75mm RECTANGLES

Lume subway format is the grownup of the family with its clean and minimal lines. The subway really allows the character of the stone to shine.



Subway Pegasus Cream (Satin Matt) HCB4S-117



LUME INSPIRATION



Subway Titanium Chill (Gloss) HCG4S-112



Kit Kat Biscotti Bliss (Satin Matt) HCD4P-117



Brick Amalfi Cream (Satin Matt) HCK4R-117

DIAMOND WHITE (SATIN MATT)



Kit Kat Diamond White (Satin Matt) HCC4P-117



Fingers Diamond White (Satin Matt) HCC4Q-117



Brick Diamond White (Satin Matt) HCC4R-117



Subway Diamond White (Satin Matt) HCC4S-117



DIAMOND WHITE (GLOSS)



Kit Kat Diamond White (Gloss) HCC4P-112



Fingers Diamond White (Gloss) HCC4Q-112



Brick Diamond White (Gloss) HCC4R-112



Subway Diamond White (Gloss) HCC4S-112

BISCOTTI BLISS (SATIN MATT)



Kit Kat Biscotti Bliss (Satin Matt) HCD4P-117



Fingers Biscotti Bliss (Satin Matt) HCD4Q-117



Brick Biscotti Bliss (Satin Matt) HCD4R-117



Subway Biscotti Bliss (Satin Matt) HCD4S-117



BISCOTTI BLISS (GLOSS)



Kit Kat Biscotti Bliss (Gloss) HCD4P-112



Fingers Biscotti Bliss (Gloss) HCD4Q-112



Brick Biscotti Bliss (Gloss) HCD4R-112

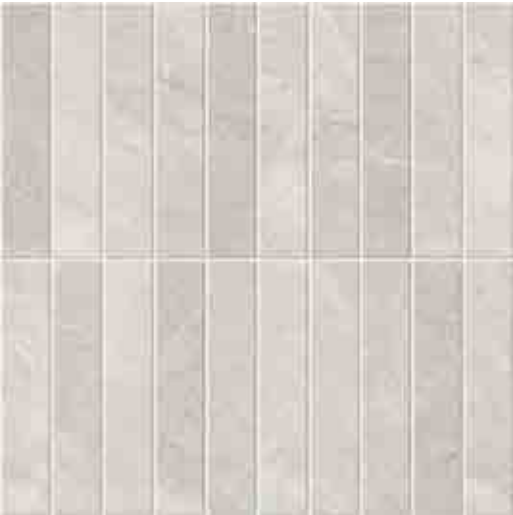


Subway Biscotti Bliss (Gloss) HCD4S-112

SILK GREY (SATIN MATT)



Kit Kat Silk Grey (Satin Matt) HCF4P-117



Fingers Silk Grey (Satin Matt) HCF4Q-117



Brick Silk Grey (Satin Matt) HCF4R-117



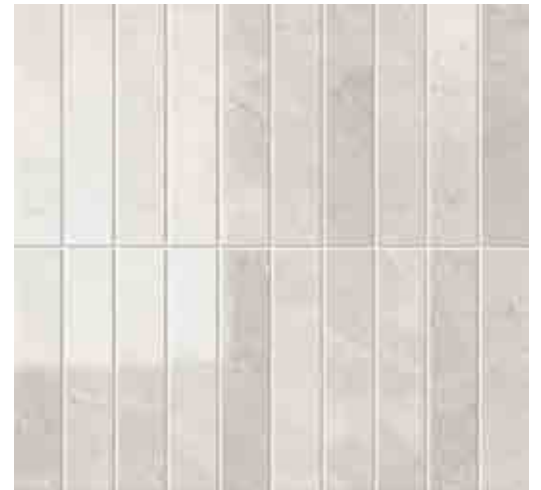
Subway Silk Grey (Satin Matt) HCF4S-117



SILK GREY (GLOSS)



Kit Kat Silk Grey (Gloss) HCF4P-112



Fingers Silk Grey (Gloss) HCF4Q-112



Brick Silk Grey (Gloss) HCF4R-112



Subway Silk Grey (Gloss) HCF4S-112

ANCIENT GREY (SATIN MATT)



Kit Kat Ancient Grey (Satin Matt) HCE4P-117



Fingers Ancient Grey (Satin Matt) HCE4Q-117



Brick Ancient Grey (Satin Matt) HCE4R-117



Subway Ancient Grey (Satin Matt) HCE4S-117



ANCIENT GREY (GLOSS)



Kit Kat Ancient Grey (Gloss) HCE4P-112



Fingers Ancient Grey (Gloss) HCE4Q-112



Brick Ancient Grey (Gloss) HCE4R-112



Subway Ancient Grey (Gloss) HCE4S-112

PEGASUS CREAM (SATIN MATT)



Kit Kat Pegasus Cream (Satin Matt) HCB4P-117



Fingers Pegasus Cream (Satin Matt) HCB4Q-117



Brick Pegasus Cream (Satin Matt) HCB4R-117



Subway Pegasus Cream (Satin Matt) HCB4S-117



PEGASUS CREAM (GLOSS)



Kit Kat Pegasus Cream (Gloss) HCB4P-112



Fingers Pegasus Cream (Gloss) HCB4Q-112



Brick Pegasus Cream (Gloss) HCB4R-112



Subway Pegasus Cream (Gloss) HCB4S-112

AMALFI CREAM (SATIN MATT)



Kit Kat Amalfi Cream (Satin Matt) HCK4P-117



Fingers Amalfi Cream (Satin Matt) HCK4Q-117



Brick Amalfi Cream (Satin Matt) HCK4R-117



Subway Amalfi Cream (Satin Matt) HCK4S-117



AMALFI CREAM (GLOSS)



Kit Kat Amalfi Cream (Gloss) HCK4P-112



Fingers Amalfi Cream (Gloss) HCK4Q-112

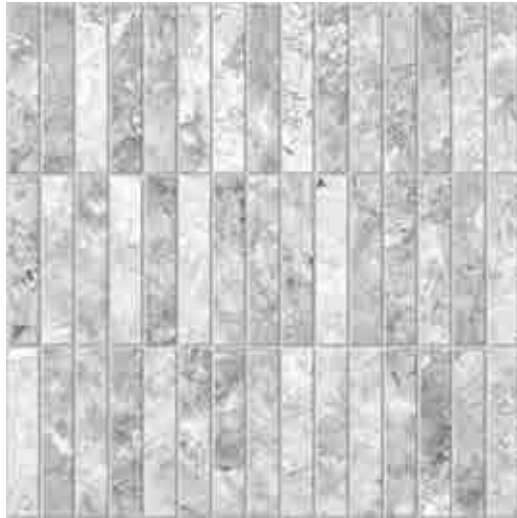


Brick Amalfi Cream (Gloss) HCK4R-112

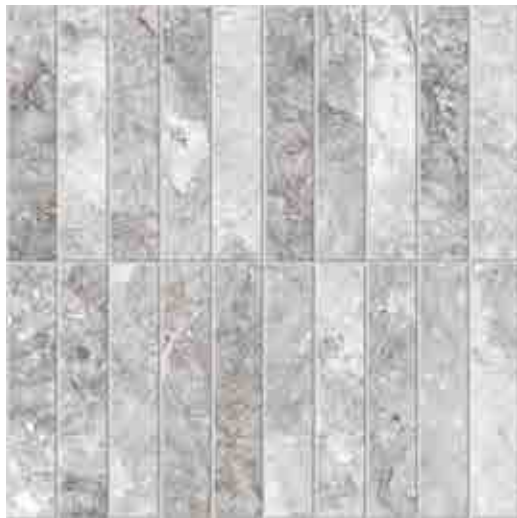


Subway Amalfi Cream (Gloss) HCK4S-112

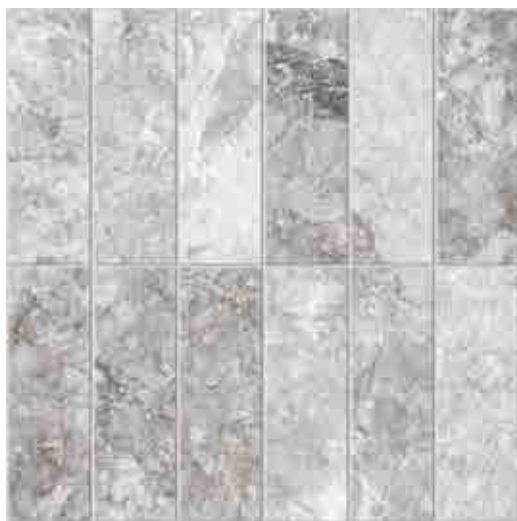
TWILIGHT SKY (SATIN MATT)



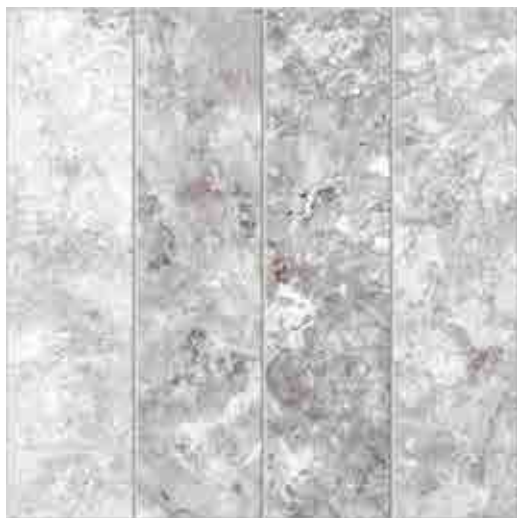
Kit Kat Twilight Sky (Satin Matt) HCL4P-117



Fingers Twilight Sky (Satin Matt) HCL4Q-117



Brick Twilight Sky (Satin Matt) HCL4R-117



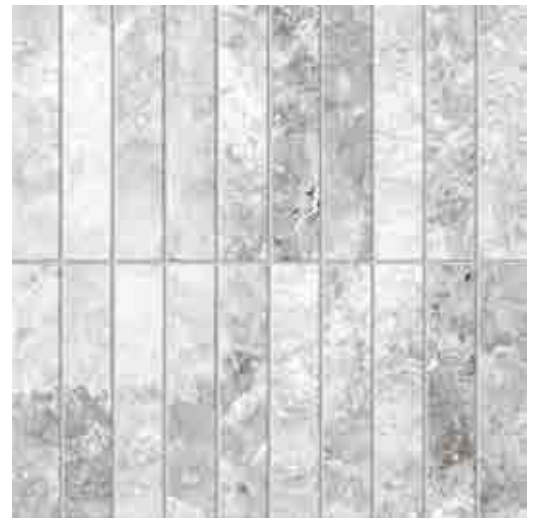
Subway Twilight Sky (Satin Matt) HCL4S-117



TWILIGHT SKY (GLOSS)



Kit Kat Twilight Sky (Gloss) HCL4P-112



Fingers Twilight Sky (Gloss) HCL4Q-112



Brick Twilight Sky (Gloss) HCL4R-112



Subway Twilight Sky (Gloss) HCL4S-112

COSMOPOLITAN PINK (SATIN MATT)



Kit Kat Cosmopolitan Pink (Satin Matt) HCJ4P-117



Fingers Cosmopolitan Pink (Satin Matt) HCJ4Q-117



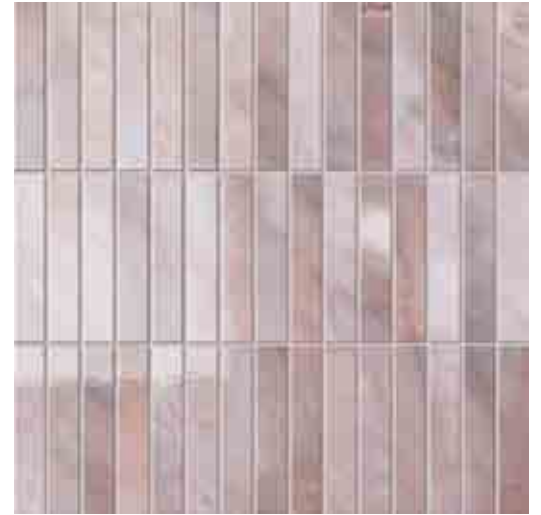
Brick Cosmopolitan Pink (Satin Matt) HCJ4R-117



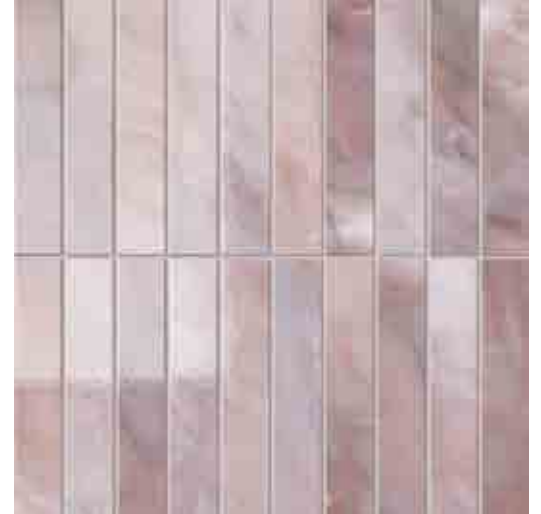
Subway Cosmopolitan Pink (Satin Matt) HCJ4S-117



COSMOPOLITAN PINK (GLOSS)



Kit Kat Cosmopolitan Pink (Gloss) HCJ4P-112



Fingers Cosmopolitan Pink (Gloss) HCJ4Q-112



Brick Cosmopolitan Pink (Gloss) HCJ4R-112



Subway Cosmopolitan Pink (Gloss) HCJ4S-112

TITANIUM CHILL (SATIN MATT)



Kit Kat Titanium Chill (Satin Matt) HCG4P-117



Fingers Titanium Chill (Satin Matt) HCG4Q-117



Brick Titanium Chill (Satin Matt) HCG4R-117



Subway Titanium Chill (Satin Matt) HCG4S-117



TITANIUM CHILL (GLOSS)



Kit Kat Titanium Chill (Gloss) HCG4P-112



Fingers Titanium Chill (Gloss) HCG4Q-112



Brick Titanium Chill (Gloss) HCG4R-112



Subway Titanium Chill (Gloss) HCG4S-112

STELLA TAUPE (SATIN MATT)



Kit Kat Stella Taupe (Satin Matt) HCA4P-117



Fingers Stella Taupe (Satin Matt) HCA4Q-117



Brick Stella Taupe (Satin Matt) HCA4R-117



Subway Stella Taupe (Satin Matt) HCA4S-117



STELLA TAUPE (GLOSS)



Kit Kat Stella Taupe (Gloss) HCA4P-112



Fingers Stella Taupe (Gloss) HCA4Q-112

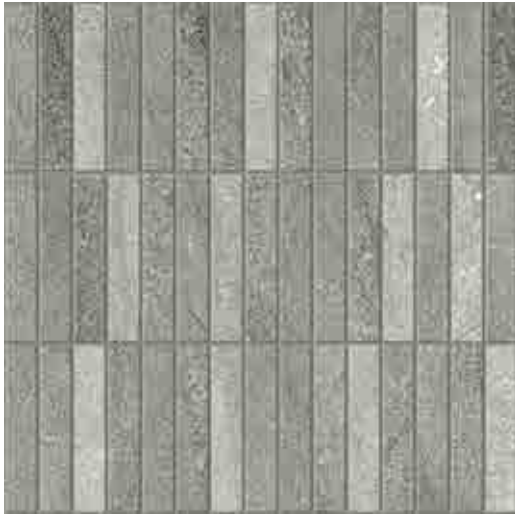


Brick Stella Taupe (Gloss) HCA4R-112



Subway Stella Taupe (Gloss) HCA4S-112

ANGOLA GREY (SATIN MATT)



Kit Kat Angola Grey (Satin Matt) HBY4P-117



Fingers Angola Grey (Satin Matt) HBY4Q-117



Brick Angola Grey (Satin Matt) HBY4R-117



Subway Angola Grey (Satin Matt) HBY4S-117



ANGOLA GREY (GLOSS)



Kit Kat Angola Grey (Gloss) HBY4P-112



Fingers Angola Grey (Gloss) HBY4Q-112

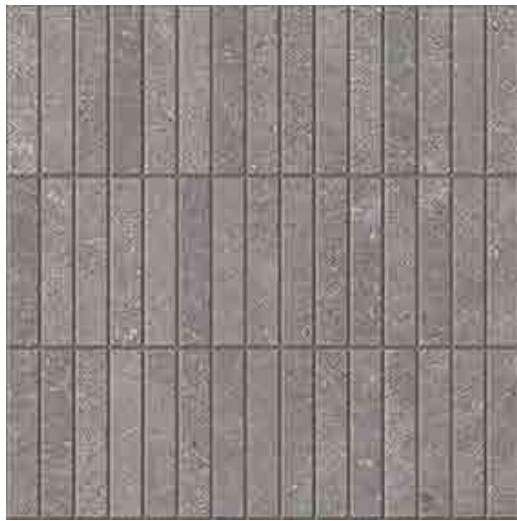


Brick Angola Grey (Gloss) HBY4R-112

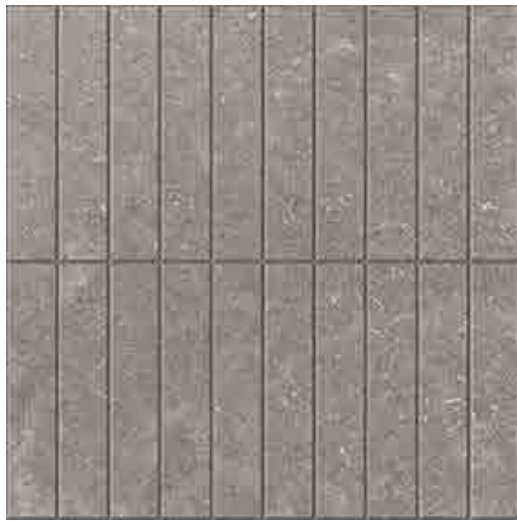


Subway Angola Grey (Gloss) HBY4S-112

GRIGIO HAZE (SATIN MATT)



Kit Kat Grigio Haze (Satin Matt) HCH4P-117



Fingers Grigio Haze (Satin Matt) HCH4Q-117



Brick Grigio Haze (Satin Matt) HCH4R-117



Subway Grigio Haze (Satin Matt) HCH4S-117



GRIGIO HAZE (GLOSS)



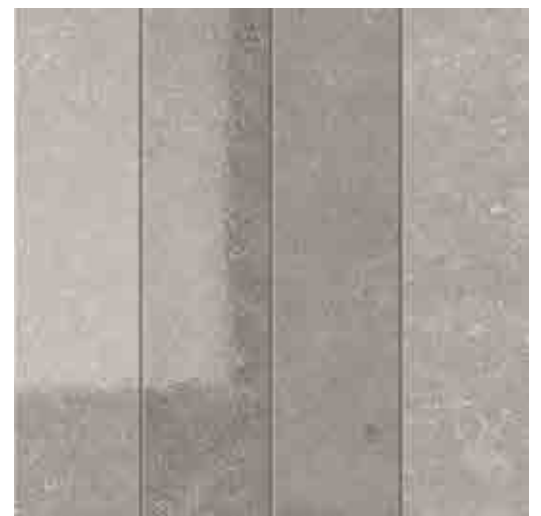
Kit Kat Grigio Haze (Gloss) HCH4P-112



Fingers Grigio Haze (Gloss) HCH4Q-112



Brick Grigio Haze (Gloss) HCH4R-112



Subway Grigio Haze (Gloss) HCH4S-112

TILE CARE AND MAINTENANCE – FOR THE TILER AND CUSTOMER

This important information will help keep your tiles looking their best for many years to come. Correct installation, regular inspections and maintenance are the best ways to keep your tiles in good condition. Tiles must be installed in line with Australian standards. No claims will be recognised if tiling is not done in accordance with Australian standards.

PRIOR TO INSTALLATION

- Check that the product and quantities are correct.
- Conduct a test run or 'dry lay' with your installer to determine where cuts will need to be made.
Note: Installation of the product constitutes full acceptance.
- Lay out the tiles on a flat surface before fixing. Break up any light or dark groupings to give an even result.
- It is recommended that the designer/homeowner approves the layout at this stage as installation of the product constitutes full acceptance and no claims will be recognised.

INSTALLING YOUR TILES – RECOMMENDED METHOD

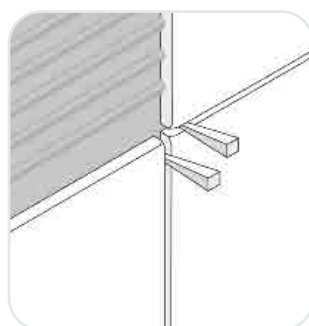
Cutting - Wet Saw

- Mark the line to be cut.
- Cut along the line using the wet saw fitted with a continuous rim blade in good condition.
- Cut using multiple passes at increasing depths; the first cut pass should be a shallow one.
- Once all tiles are cut to size, they are ready to be used.



Spacing

- Use either cross and 'T' spacers or wedges to achieve consistent spacing.



Setting

- Once the tiles are set in place, apply a straight edge to the tiled area to ensure the surface is flat and to avoid any lipping.

Grout Selection / Installation

- Use a good quality cement based, non sanded grout to ensure a scratch free installation.
- When grouting slip resistant tiles, wash the grout off before it dries to ensure the slip resistant micropores are not impaired.

Grout Final Wash

- Wipe with a soft, dry towel.
- DO NOT use acid or detergent based cleaners on your tiles.
- Ceramic and porcelain tiles do not need to be sealed. Always seal natural stone and cement tiles.
- We recommend using PH neutral tile cleaners or warm water mixed with white vinegar; four parts water to one part vinegar. Tiles can be cleaned with a steam mop.
- For a deep clean, use a soft bristle broom with a PH neutral tile cleaner.

MAINTAINING YOUR TILES

- Regular inspection is the best way to keep your tiles in good condition.
- DO NOT use acid or detergent based cleaners on your tiles.
- Ceramic and porcelain tiles do not need to be sealed. Always seal natural stone and cement tiles.
- We recommend using PH neutral tile cleaners or warm water mixed with white vinegar; four parts water to one part vinegar.
- Tiles can be cleaned with a steam mop.
- For a deep clean, use a soft bristle broom with a PH neutral tile cleaner.

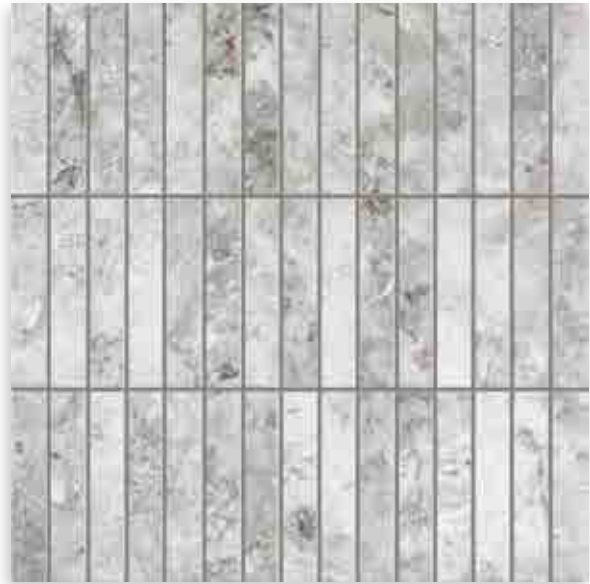
GROUT CONSIDERATIONS

All Lume formats come ungrouted and the choice of grout colour will effect the final appearance.

Opting for a grout colour that is darker or lighter than the tile colour will highlight the individual pieces in the tile design, while choosing a grout colour closely matching the tile colour will create a more uniform look.



Kit Kat Twilight Sky (Satin Matt) HCL4P-117
with Laticrete Frosty #09 Grout



Kit Kat Twilight Sky (Satin Matt) HCL4P-117
with Kerakoll Fugabella Colour #10 Grout



Kit Kat Grigio Haze (Satin Matt) HCH4P-117
with Laticrete Bright White #44 Grout



Kit Kat Grigio Haze (Satin Matt) HCH4P-117
with Laticrete Sterling Silver #78 Grout



Kit Kat Titanium Chill (Satin Matt) HCG4P-117
with Laticrete Iron #97 Grout