

FOR THE CUSTOMER

TILE CARE AND MAINTENANCE

This important information will help keep your tiles looking their best for many years to come.
Please follow these simple instructions:



Prior to Installation:

- Check that the product and quantities are correct.
- Conduct a test run or 'dry lay' with your installer to determine where cuts will need to be made.

Note: Installation of the product constitutes full acceptance.

Tiles must be fixed, grouted and cleaned in line with Australian standards. Defect claims caused by a failure to install in accordance with Australian standards will not be recognised.



For more information on tile care and maintenance and product recommendations scan the QR code or go to:
www.southerncrossceramics.com

Care and Maintenance:

- Regular inspection is the best way to keep your tiles in good condition.
- DO NOT use acid or detergent based cleaners on your tiles.
- Ceramic and porcelain tiles do not need to be sealed. Always seal natural stone and cement tiles.
- We recommend using PH neutral tile cleaners or warm water mixed with white vinegar; four parts water to one part vinegar.
- Tiles can be cleaned with a steam mop.
- For a deep clean, use a soft bristle broom with a PH neutral tile cleaner.

Southern Cross
C E R A M I C S

FOR THE TILER

TILE INSTALLATION INSTRUCTIONS

Prior to Installation:

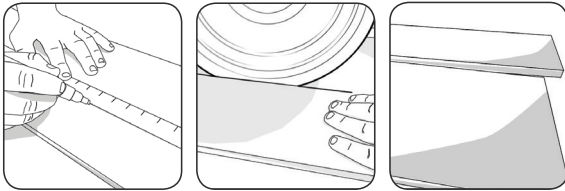
- Lay out the tiles on a flat surface before fixing. Break up any light or dark groupings to give an even result.
- It is recommended that the designer/homeowner approves the layout at this stage as installation of the product constitutes full acceptance and no claims will be given.

Tiles must be installed in line with Australian standards. No claims will be recognised if tiling is not done in accordance with Australian standards.

Cutting

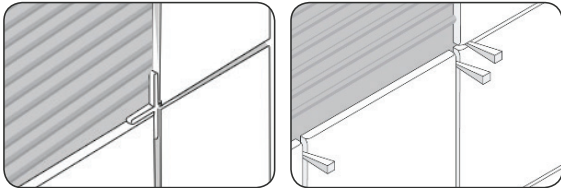
Wet Saw (Recommended method)

- Mark the line to be cut.
- Cut along the line using the wet saw fitted with a continuous rim blade in good condition.
- Cut using multiple passes at increasing depths; the first cut pass should be a shallow one.
- Once all tiles are cut to size, they are ready to be used.



Spacing (Recommended)

- Use either cross and 'T' spacers or wedges to achieve consistent spacing.



Disclaimer:

No claim will be accepted by Southern Cross Ceramics after tiles have been installed. Southern Cross Ceramics shall not be liable for any damage, breakage, or loss whatsoever incurred by the customer after pickup from a Southern Cross Ceramics warehouse or alternatively after a Southern Cross Ceramics delivery. All tiling is to be done in accordance with AS 3958.1 - 2007 Ceramic Tiles - Guide to the installation of ceramic tiles and or AS/NZS 4386. 2:1996 Domestic kitchen assemblies - installation.

Setting (Recommended)

- Once the tiles are set in place, apply a straight edge to the tiled area to ensure the surface is flat and to avoid any lipping.

Grout Selection/Installation

- Use a good quality cement based, non sanded grout to ensure a scratch free installation.
- When grouting slip resistant tiles, wash the grout off before it dries to ensure the slip resistant micropores are not impaired.

Grout Final Wash

- Wipe with a soft, dry towel.
- DO NOT use acid or detergent based cleaners on your tiles.
- Ceramic and porcelain tiles do not need to be sealed. Always seal natural stone and cement tiles.
- We recommend using PH neutral tile cleaners or warm water mixed with white vinegar; four parts water to one part vinegar. Tiles can be cleaned with a steam mop.
- For a deep clean, use a soft bristle broom with a PH neutral tile cleaner.



For more information on tile care and maintenance and product recommendations scan the QR code or go to:
www.southerncrossceramics.com